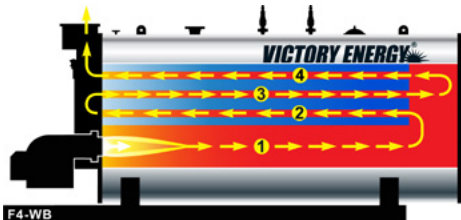


## FIRETUBE BOILER

# 4-PASS WETBACK



### EXCELLENCE IN THE MAKING

Every FRONTIER® firetube boiler is produced against a company-wide “Concept to Completion” credo that exists from project inception through to boiler commissioning and start-up. Our manufacturing facilities are equipped to deliver on the diversity of firetube applications across multiple industries.

Our firetube team works seamlessly from in-house engineering and project management on through to manufacturing, logistics and field service to deliver a flawless product. Victory Energy controls the quality and timeliness on all project engagements to ensure that the product arrives on time and on budget.

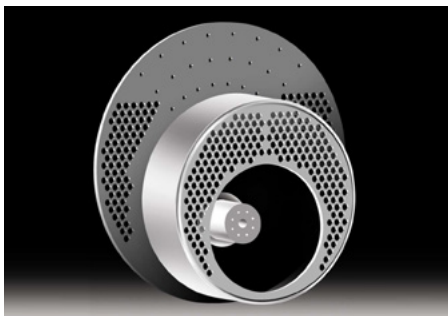
### HP RANGES FROM 200 HP - 2,500 HP

#### 4-PASS TECHNOLOGY

- Engineered for efficient-duty operation
- Front flue gas outlet

#### WETBACK DESIGN

- Ideally suited for “varying” steam loads
- Engineered for less yearly maintenance issues, wetback boilers utilizes it’s water as the heat bearer to boiler components
- Water cooled flue gas reversing chamber reduces thermal stress



**DEEP TURN-AROUND FOR EASE OF MAINTENANCE AND LOWER PRESSURE DROP**

#### F4-WB FEATURES

- ✓ Ring groove technology
- ✓ Front davit doors
- ✓ Rear davit entry doors
- ✓ Large diameter tubes reduce blower motor HP requirements
- ✓ 24” OD davit access door to water cooled flue gas reversing chamber and furnace section
- ✓ Heavy-duty gauge tubes - 0.105” MW
- ✓ .75-inch minimum tubesheet wall thickness
- ✓ Heavy-duty steel frame
- ✓ Water-cooled reversing chamber
- ✓ Stainless steel jacket
- ✓ 2-inch mineral wool insulation

#### OFFERED BY:

Powerhouse Combustion & Mechanical Corporation  
3410 W. Maywood Avenue Santa Ana, CA 92704  
[www.powerhouse-combustion.com](http://www.powerhouse-combustion.com)

# FIRETUBE BOILER

## 4-PASS WETBACK

### LARGE FURNACE AND TURNAROUND

The 3-pass design is never less than 28 inches turnaround depth. Overall low gas side pressure drop facilitates excellent burner performance with low blower motor HP requirements.

### MINIMAL THERMAL STRESS

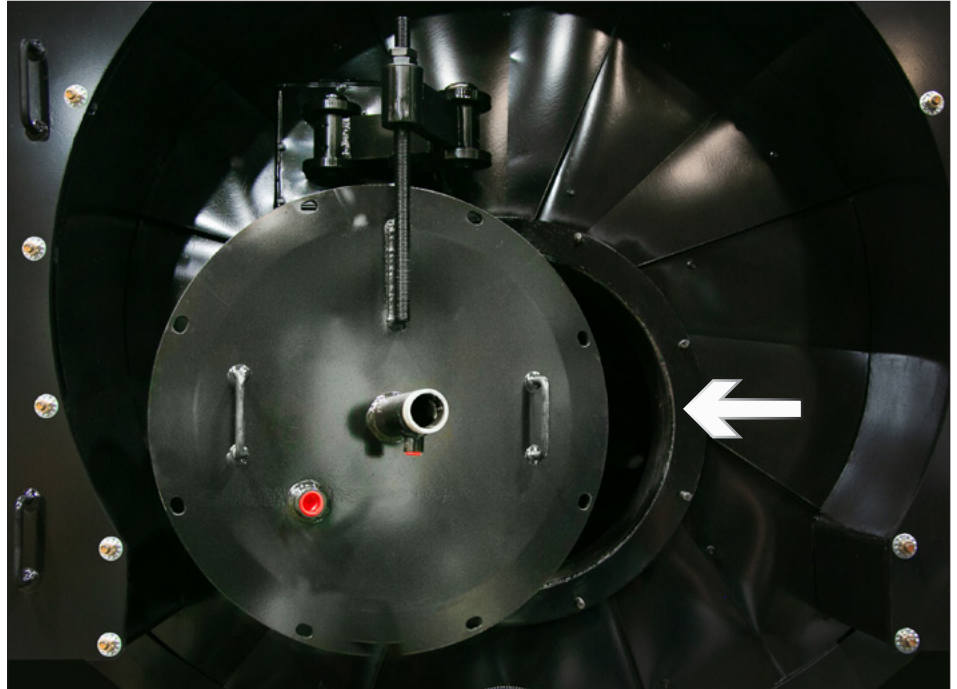
A single flue gas turnaround from the furnace to the 2nd pass tubes minimizes tube sheet temperature differentials. Less thermal stress means reduced maintenance and repair costs.

### EROSION PROTECTION

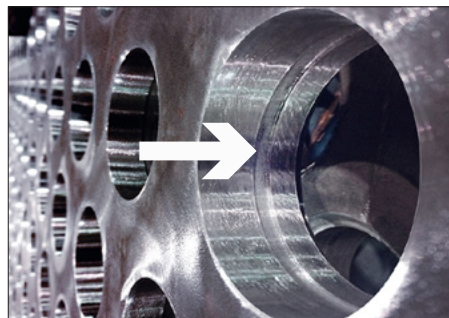
Rather than using hardener over insulation on davited doors, as most competitors do, Victory Energy takes the extra step of providing a high performance metal covering to protect insulation.

### RING GROOVE ENGINEERING

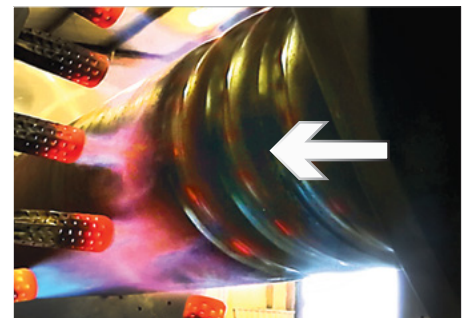
Exclusive Victory Energy "ring groove" standard tube attachment results in a very robust tube to tubesheet connection. The added ring groove creates a 40% stronger joint.



**HEAVY-DUTY DAVITED 24" ACCESS DOOR TO THE REVERSING CHAMBER AND FURNACE**



**RING GROOVE WITH 3/4 INCH LIGAMENTS**



**CORRUGATED FURNACE**

### NOTE:

For dimensions and data info, contact your firetube rep for Document F4-WB-NE.

### OFFERED BY:

Powerhouse Combustion & Mechanical Corporation  
3410 W. Maywood Avenue Santa Ana, CA 92704  
[www.powerhouse-combustion.com](http://www.powerhouse-combustion.com)